

# Cutter Bar Adjustment

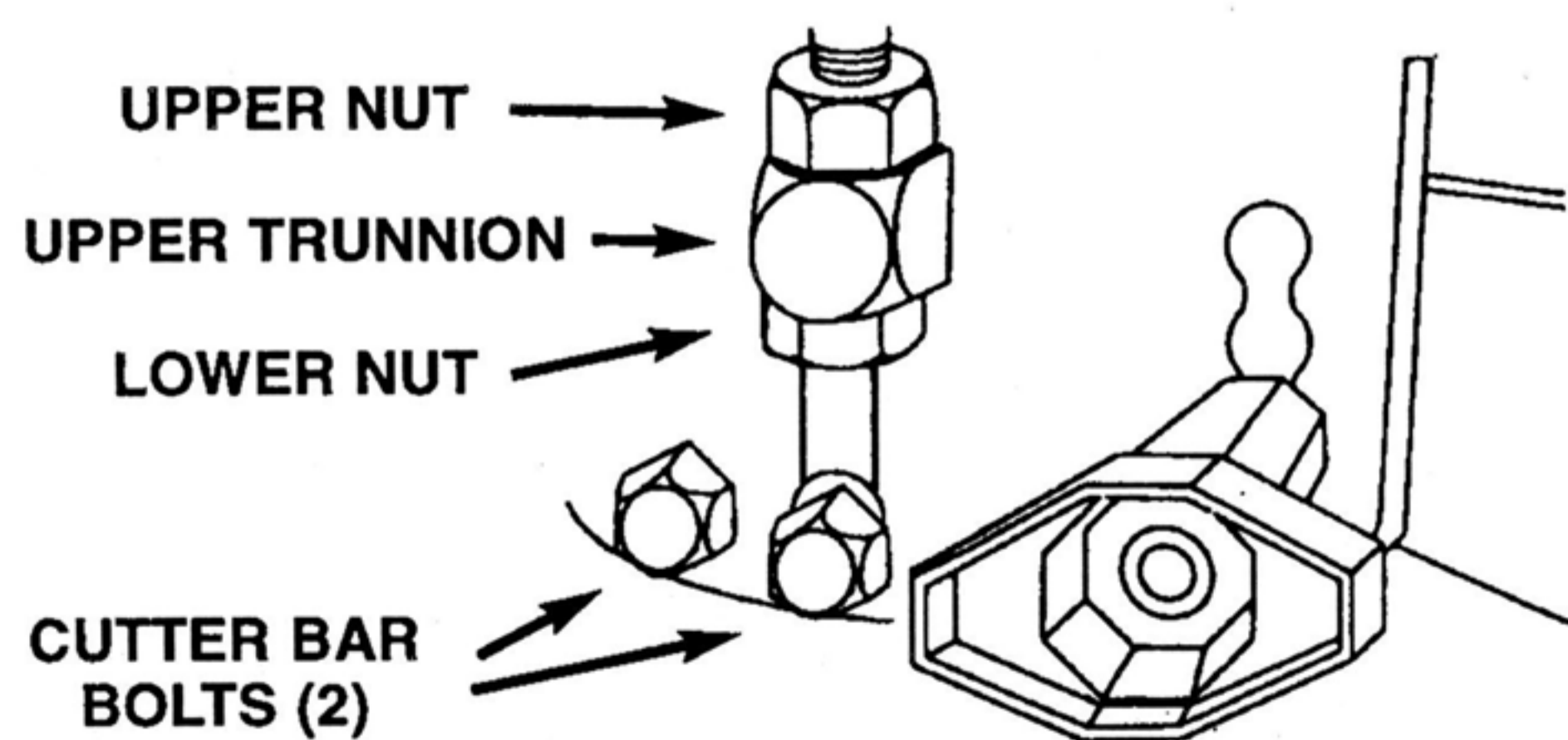
The cutter bar on your mower was professionally adjusted before it left our shop. Many years of experience tell us that light contact provides a superior cut and the mower can go longer without needing to be sharpened when set this way.

Some customers have reported that their mower was a little difficult to push the first time they used it but that it quickly became easier. Spraying the reel blades with WD40 or another lubricant will reduce the friction between the blades, making the mower easier to push and minimizing wear of the blades.

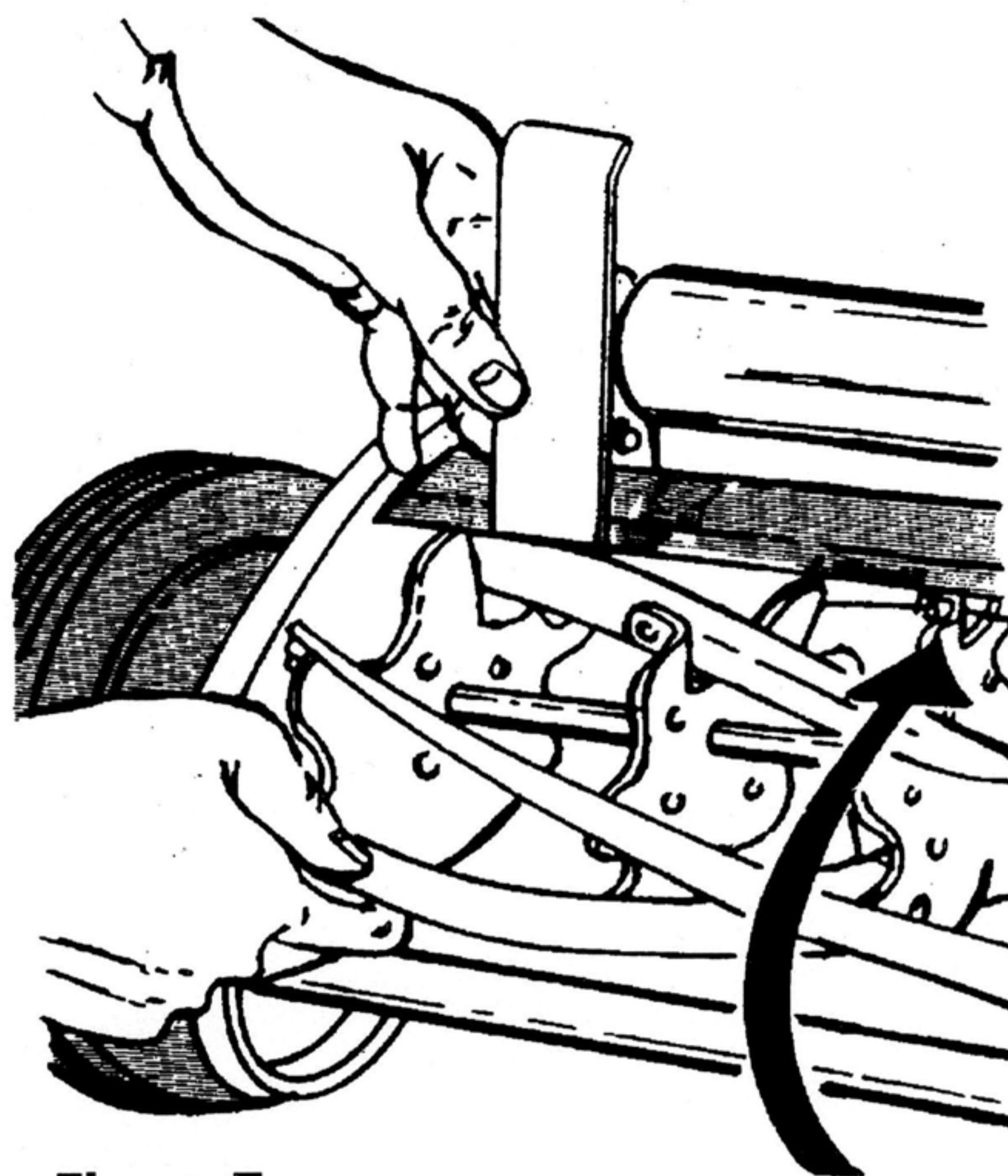
After considerable use or sharpening, the cutter bar may need adjustment.. This requires a 3/8" wrench.

Make certain that the bolt and the trunnion which are threaded into the cutter bar are tight, to eliminate any play or looseness, before beginning adjustment of the cutter bar.

To decrease the clearance between the cutter bar and the blades, turn the upper nut 1/4 turn and then tighten the lower nut 1/4 turn. Adjust each side equally until there is minimal contact. It is important that the cutter bar be set so that the contact is even across the cutter bar, from one side of the mower to the other. You can test this by slowly turning the reel and listening to the sound of the reel blades as they contact the cutter bar, or you can use the paper test described on this page. Please see Figures 6 & 7.



**Figure 6**



**Figure 7**

1. Push the handle of the mower forward and let it rest on the ground. The roller will be off the ground.
2. Insert a strip of quality .0003" paper such as writing paper or a magazine page, approximately 2" wide and 6" long, between the cutter bar and the reel blades as shown in Figure 10.
3. Turn the reel slowly and carefully, inserting the paper at intervals across the reel. The reel will turn easily and will cut the paper all the way across the cutter bar.